

The Figure 50 Series and the J500 Series are an assortment of pressure gauges used to handle a wide variety of pressure measurements both in the laboratory and in the field.

A pressure gauge guide (table 1) summarizes the product line and aids in matching a series to your particular needs. Detailed information on each gauge within a series, including the pressure range and part number, is available throughout the remainder of the bulletin.

## Features

- **Versatility**—A comprehensive selection of ranges, units, and connections meets requirements for a large assortment of pressure measurements.
- **High Visibility**—A slim black pointer pivots over easy-to-read black symbols against a white background.
- **Convenient Connections**—Most J500 Series gauges can be connected at the back for compact installations where space is limited. Figure 50P gauges measure pressure remotely through a flexible hose.

## Figure 50 and Figure 50P Series

These gauges are housed in a black steel case with a molded plastic window. As indicated in table 1, the Figure 50P gauges differ from the Figure 50 gauges only in that they measure pressure through a flexible hose instead of a 1/4-inch NPT connection. A dash number designator added to the Figure number indicates the different gauge calibrations (see table 2). The standard gauge, shown in figure 1, is calibrated in 0 to 20 ounces per square inch and in 0 to 35 inches of water column. Figure 2 shows the same gauge, designated as 50P-2, mounted in a plastic carrying case. Tables 2 through 4 describe the calibration available in this series.

## J500 Series

These gauges are housed in a black steel case with a molded plastic window and feature the choice of having the 1/4-inch NPT connection on either the bottom or back of the case as shown in figures 3 and 4. Tables 5 through 8 describe the calibration available in this series.

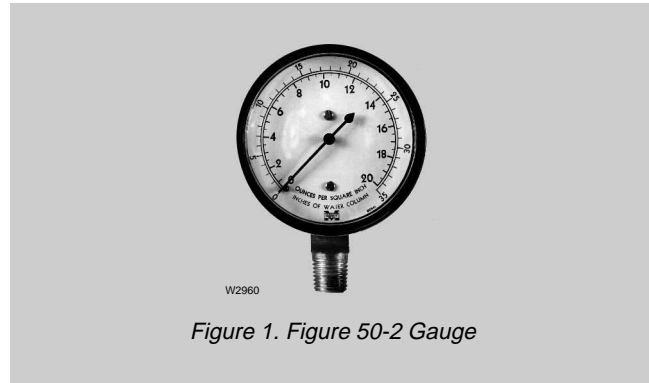


Figure 1. Figure 50-2 Gauge



Figure 2. Figure 50P-2 Gauge in Plastic Carrying Case

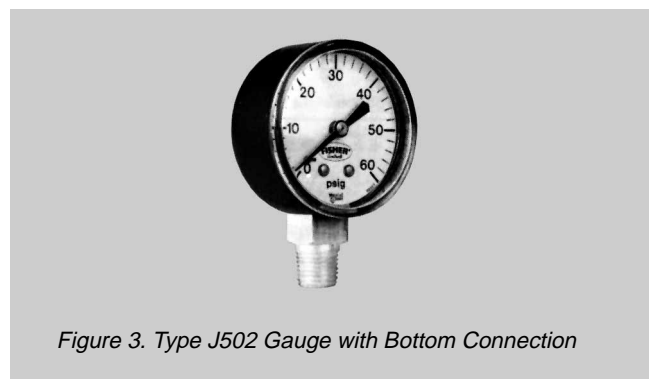


Figure 3. Type J502 Gauge with Bottom Connection



Figure 4. Type J510 Gauge with Back Connection



Table 1. Pressure Gauge Guide

TYPICAL APPLICATION	GAUGE DESIGNATION	CONNECTION	FACE DIAMETER		OTHER
			Inch	mm	
Low pressure measurements: often used in place of manometers, "U" tubes, or water columns	Figure 50	1/4-inch NPT on bottom	2.5	63	...
	Figure 50P	3-foot (2718 mm) flexible hose	2.5	63	Mounted in plastic carrying case. Case is 2.25 by 5 by 6 in. (57.2 by 127 by 152.4 mm)
	Figure 50P-5	3-foot (2718 mm) flexible hose	2.5	63	Same as the Figure 50P, but without the carrying case
Used with pneumatic instrumentation	Type J500 Series	1/4-inch NPT on bottom or back	2.0*	50.8*	Selected gauges are available for ammonia service

\*Except as noted in table 5.

Table 2. Figure 50, 50P, and 50P-5 Multiple Range Gauges

DOUBLE CALIBRATION			COMPOUND RANGES†			
Calibration	Figure Number	Part Number	Calibration		Figure Number	Part Number
			Vacuum (inches of water)	Pressure (inches of water)		
0 to 15 inches wc and 0 to 8-3/4 ounces/in. <sup>2</sup>	50-1	AA4854 000N2	10	25	50-6	AA4854 X00B2
	50P-1 and 50P-5	AA4856 000B2			50P-6 and 50P-5	AA4856 X0172
0 to 35 inches wc and 0 to 20 ounces/in. <sup>2</sup>	50-2	AA4854 000A2	40	40	50-7	AA4854 X0112
	50P-2 and 50P-5	AA4856 000G2			50P-7 and 50P-5	AA4856 X00C2
0 to 55 inches wc and 0 to 32 ounces/in. <sup>2</sup>	50-3	AA4854 000H2	100	100	50-8	AA4854 X0122
	50P-3 and 50P-5	AA4856 000C2			50P-8 and 50P-5	AA4856 X0192
0 to 100 inches wc and 0 to 58 ounces/in. <sup>2</sup>	50-4	AA4854 000M2	15	15	50-9	AA4854 X0102
	50P-4 and 50P-5	AA4856 000D2	30	30	50P-9 and 50P-5	AA4856 X0182
					50-10	AA4854 X00D2
					50P-10 and 50P-5	AA4856 X00B2

\*Standard range.  
†Calibrated in vacuum units on one portion of the face and in pressure units on the other.

Table 3. Available Figure 50 Gauges — Single Range

PRESSURE OR VACUUM RANGE	PART NUMBER FOR GAUGE CALIBRATED IN:			
	Ounces	Inches of Water	Inches of Mercury	Pounds per Square Inch
0 to 3	...	...	...	AA4854 X0092
0 to 5	...	...	AA4854 X0062	AA4854 X00C2
0 to 10	AA4854 000D2	AA4854 000E2	AA4854 X0072	AA4854 000C2
0 to 15	AA4854 X0012	AA4854 000F2	AA4854 X0082	...
0 to 30	AA4854 X0022	AA4854 X00A2	...	...
0 to 60	AA4854 000J2	AA4854 000I2	...	...
0 to 100	AA4854 000L2	AA4854 000K2	...	...
0 to 160	AA4854 X0032	AA4854 000P2	...	...
0 to 200	AA4854 X0042	AA4854 X0052	...	...

Table 4. Available 50P and 50P-5 Gauges — Single Range

PRESSURE OR VACUUM RANGE	PART NUMBER FOR GAUGE CALIBRATED IN:			
	Ounces	Inches of Water	Inches of Mercury	Pounds per Square Inch
0 to 3	...	...	...	AA4856 X0152
0 to 5	...	...	AA4856 X0122	AA4856 X00A2
0 to 10	AA4856 X0012	AA4856 X0022	AA4856 X0132	AA4856 X0162
0 to 15	AA4856 X0022	AA4856 000E2	AA4856 X0142	...
0 to 30	AA4856 X0032	AA4856 X0092	...	...
0 to 60	AA4856 X0042	AA4856 000H2	...	...
0 to 100	AA4856 X0052	AA4856 000F2	...	...
0 to 160	AA4856 X0062	AA4856 X0102	...	...
0 to 200	AA4856 X0072	AA4856 X0112	...	...

Table 5. J500 Series — Single Scale Gauges for Psig Measurements

CALIBRATION	BOTTOM CONNECTION		BACK CONNECTION	
	Type	Part Number	Type	Part Number
0 to 15	J500	1J9760 99012	J510	1J9757 99012
0 to 30	J501	1J9761 99012	J511	1J9460 99012
0 to 30*	...	...	J540	1F9910 99012
0 to 60	J502	1J9762 99012	J512	1J9752 99012
0 to 60*	...	...	J541	11A143 7X012
0 to 100	J503	1J9763 99012	J513	1J9753 99012
0 to 100*	J535	1F2556 99012	...	...
0 to 160	J504	1J9764 99012	J514	1J9754 99012
0 to 200	J505	1J9765 99012	J515	1J9756 99012
0 to 300	J506	1J9766 99012	J516	1J9755 99012
0 to 600	J507	1J9767 99012	...	...
0 to 1000	J508	1J9768 99012	...	...
0 to 2000	J509	1J9769 99012	...	...

\*These gauges are designed for ammonia service and have a 2.25 inch (57.2 mm) diameter face.

Table 7. J500 Series — Dual Scale Gauges for Psig/kPa Measurements

CALIBRATION (Psig/kPa)	BOTTOM CONNECTION		BACK CONNECTION	
	Type	Part Number	Type	Part Number
0 to 15/0 to 100	J550	13A5663 X012	J560	13A6006 X012
0 to 30/0 to 200	J551	13A5664 X012	J561	13A6007 X012
0 to 60/0 to 400	J552	13A5665 X012	J562	13A6008 X012
0 to 100/0 to 700	J553	13A6002 X012	J563	13A6009 X012
0 to 160/0 to 1100	J554	13A6003 X012	J564	13A6010 X012
0 to 200/0 to 1400	J555	13A6004 X012	J565	13A6011 X012
0 to 300/0 to 2000	J556	13A6005 X012	J566	13A6012 X012

Table 8. J500 Series — Single Scale Gauges for Kg/Cm<sup>2</sup> Measurements

Calibration	Type	Part Number
0 to 2	J518	1J9758 99012
0 to 4	J519	1J9759 99012

Table 6. J500 Series — Single Scale Gauges for kPa Measurements

CALIBRATION	BOTTOM CONNECTION		BACK CONNECTION	
	Type	Part Number	Type	Part Number
0 to 100	J570	13A6309 X012	J580	13A6316 X012
0 to 200	J571	13A6310 X012	J581	13A6317 X012
0 to 400	J572	13A6311 X012	J582	13A6318 X012
0 to 700	J573	13A6312 X012	J583	13A6319 X012
0 to 1100	J574	13A6313 X012	J584	13A5662 X012
0 to 1400	J575	13A6314 X012	J585	13A6320 X012
0 to 2000	J576	13A6315 X012	J586	13A6321 X012

## Ordering Information

Use the pressure gauge guide (table 1) to determine which series of gauges meets your measurement needs. Then use the information in the remainder of the bulletin to select the specific gauge or gauges for your requirement.

Describe the gauge completely as follows:

1. When ordering Figure 50 and Figure 50P gauges, specify quantity, figure number, and part number. To order a gauge fitted with a hose, but without the carrying case, specify the Figure 50P-5 and describe the calibration required.
2. When ordering J500 Series gauges, specify quantity, type number, and part number. Also specify bottom or back connection.

While this information is presented in good faith and believed to be accurate, Fisher Controls does not guarantee satisfactory results from reliance upon such information. *Nothing contained herein is to be construed as a warranty or guarantee, express or implied, regarding the performance, merchantability, fitness*

*or any other matter with respect to the products, nor as a recommendation to use any product or process in conflict with any patent. Fisher Controls reserves the right, without notice, to alter or improve the designs or specifications of the products described herein.*



**Fisher Controls**

*For information write:*  
P.O. Box 190, Marshalltown, Iowa 50158, U.S.A.  
or Brenchley House, Maidstone, Kent ME 14 1UQ, England